



**M3 METALS**  
**MOHAVE MINE**  
**GOLD PROPERTY**

Located in Arizona - a prolific mining friendly state

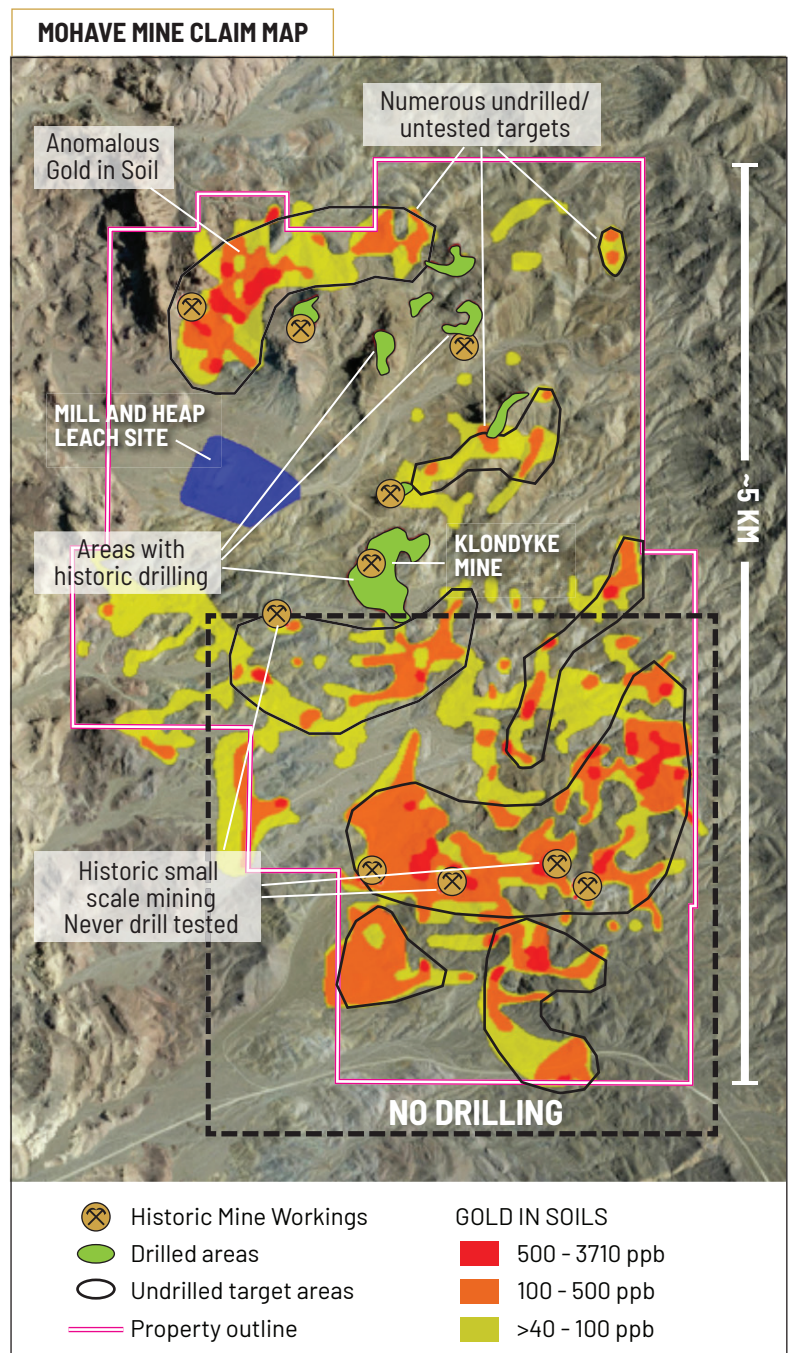
M3 Metals Corp (TSX-V: MT; FSE: X0VP) is a public listed company, focused on the exploration and development of its North American metallic mineral projects.

**HIGHLIGHTS**

- 5km gold trend in soils and rocks at surface
- Major portion of gold trend on the property remains untested
- Multiple historic gold mines have open extensions laterally and to depth
- Project has only seen shallow drilling averaging 34 metres
- Small scale mines could be part of much larger system encompassing entire property
- Good gold grades at surface support economic mining potential at Mohave
- No gold equivalent has been calculated and historic resources are considered by the company to be conservative in nature
- M3 Metals aims to create 3D model of historic resources and bring them into a 43-101 compliance category



**MOHAVE MINE GOLD PROPERTY**  
ARIZONA, USA





# MOHAVE MINE GOLD PROPERTY

## EXISTING INFRASTRUCTURE

- Existing heap leach infrastructure on site was built in 1990's to 90% completion but never reached production
- Existing ore from Klondyke Mine stockpiled next to heap leach pad, ready to be leached
- Heap leach pad construction 90% complete, requires new liner on main pad and barren and pregnant ponds

## UNTAPPED UPSIDE

- Numerous untested targets including extensions of historic mines and prospects
- Target areas include: Red Gap, Apex, Epidote Ridge, East Klondyke, RA, Hot Springs North, Hot Springs South, Jamie, Ringbolt, Dixie Gold Mine, Middle Dixie, Dixie Queen Mine, Fred's Hill, Jack's Hill, and Cottonwood.
- Extensive soil and rock gold anomalies across 5 kilometre strike length on the Property
- No gold equivalent has been calculated historically, silver not included in resource
- Project has never been modeled to capture full resource potential
- Aggressive exploration plan set to tap into untested mineralized systems

## MANAGEMENT

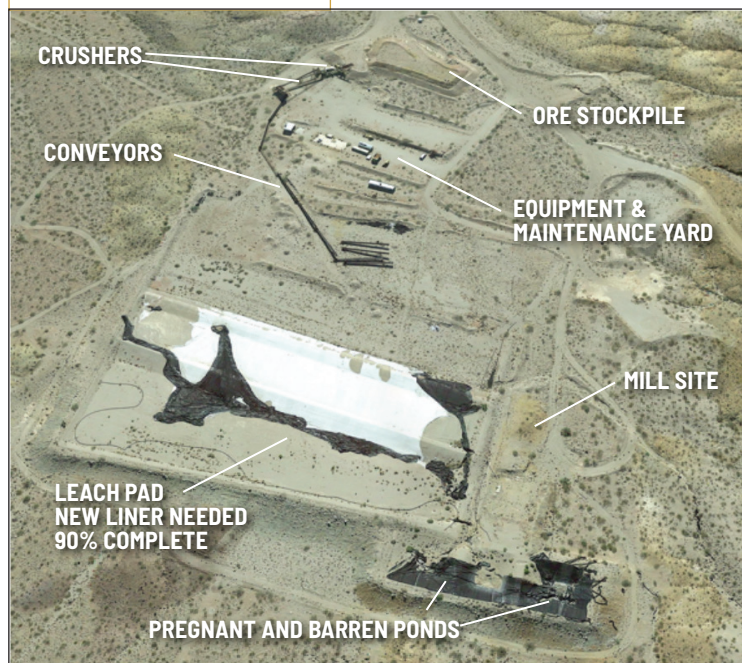
<b>Adrian Smith</b> , P.Geo.	President and Director
<b>Kosta Tsoutsis</b>	CEO and Director
<b>Brian Morrison</b> , B.Comm.	CFO and Director
<b>Simon Clark</b>	Director

## CAPITAL STRUCTURE

Issued & Outstanding	29,742,276
Warrants @ \$1.80	284,541
Warrants @ \$1.50	588,780
Warrants @ \$1.20	1,273,750
Warrants @ \$0.80	35,700
Warrants @ \$1.00	29,600
Warrants @ \$1.40	302,500
Warrants @ \$0.15	19,000,000
Options	2,000,000
Fully Diluted	53,257,147
Cash Positions	\$1,300,000
Fully Diluted Cash Position	\$8,155,500

Disclaimer: The Company has not independently confirmed the historic resources and reserves referenced herein and the Company considers all tonnages and grades historical in nature. Furthermore the information contained in this document are considered forward-looking in nature.

## MOHAVE MINE SITE MAP



## LOW COST PRODUCTION

- Cost effective low-capital heap leach style operation
- Low Strip Ratios - mineralization occurs at or near surface

## LOCATION AND ACCESS

- Located in one of the highest rated mining friendly states in the USA and in the world
- Covers significant portion of historic Weaver mining district, Mohave County, Arizona
- Straight forward mining laws in favour of mining operations
- Well developed mine access roads across the property, approximately 2 hours southeast of Las Vegas, Nevada

## PATH FORWARD

- Begin aggressive exploration program aimed to significantly expand on the historic resources on the property
- Initiate the permitting process for production
- Digitize all historic records available on the property to bring into compliance and capture additional ounces
- Complete aggressive drilling and update 43-101 compliant resource on property



2310 - 1177 West Hasting Street  
Vancouver BC V6E 2K3  
604.669.2279

[info@m3metalscorp.com](mailto:info@m3metalscorp.com)

[M3METALSCORP.COM](http://M3METALSCORP.COM)

TSX-V: MT | OTC: MLGCF | FSE: XOVP